

TRANSITION TO EMPLOYMENT FOR NEWCOMERS

Supporting newcomers on their pathway to employment

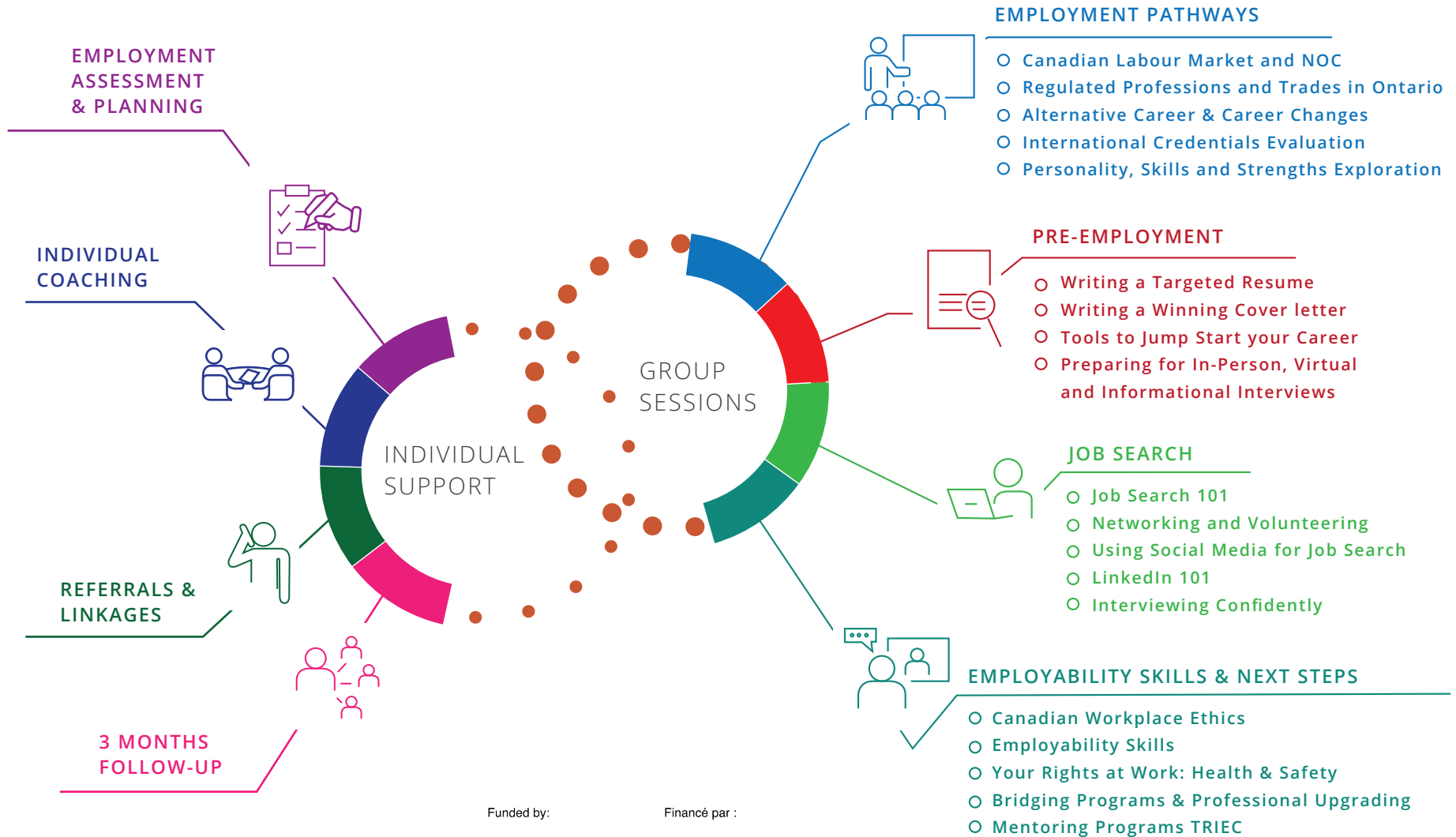
Open for: permanent resident, protected person or convention refugee at any stage of job search



POLYCULTURAL
IMMIGRANT & COMMUNITY SERVICES

TO JOIN THE PROGRAM CONTACT US
1-844-493-5839

MISSISSAUGA EXT. 5237
ETOBICOKE EXT. 1255
SCARBOROUGH EXT. 3252



Funded by:

Financé par :



Immigration, Refugees and Citizenship Canada

Immigration, Réfugiés et Citoyenneté Canada